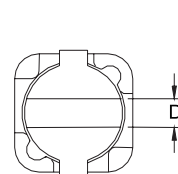
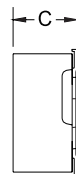
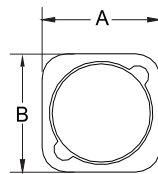
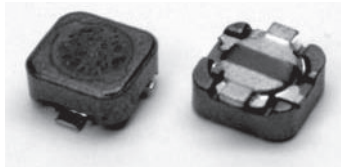


HCRH0630 TYPE

TYPE

HCRH 0630



A: 6.6 ± 0.3
 B: 6.2 ± 0.3
 C: 3.0 MAX.
 D: 1.5 REF

DIMENSION

SPECIFICATION

ITEM	L	DCR	IDC
HCRH0630	(μ H)	MAX.(Ω)	MAX.(A)
100M	10 \pm 20%	0.150	1.10
120M	12 \pm 20%	0.200	1.00
150M	15 \pm 20%	0.230	0.90
180M	18 \pm 20%	0.270	0.80
220M	22 \pm 20%	0.340	0.74
270M	27 \pm 20%	0.380	0.66
330M	33 \pm 20%	0.450	0.59
390M	39 \pm 20%	0.490	0.54
470M	47 \pm 20%	0.690	0.50
560M	56 \pm 20%	0.780	0.46
680M	68 \pm 20%	1.070	0.42
820M	82 \pm 20%	1.210	0.38
101M	100 \pm 20%	1.390	0.34
121M	120 \pm 20%	1.900	0.31
151M	150 \pm 20%	2.180	0.28
181M	180 \pm 20%	2.770	0.26
221M	220 \pm 20%	3.120	0.23

J: $\pm 5\%$, K: $\pm 10\%$, M: $\pm 20\%$

can design any part to your requirements with different inductance.

* All parameters as this content presented are subject to final specifications both sides confirmed.