

HCRS104 TYPE

SPECIALIZE IN HIGH CURRENT & HIGH
 INDUCTANCE FOR SMD INDUCTORS

CHARACTERISTICS

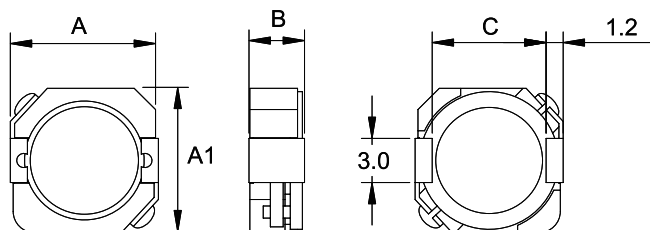
1. TESTED AT 100KHZ, 0.5VRMS
2. OPERATING TEMPERATURE RANGE: -40°C TO +85°C
3. ELECTRICAL SPECIFICATIONS AT 25°C
4. IDC: INDUCTANCE DROP ≤35% AT IDC

ELECTRICAL SPECIFICATION

ITEM	L	DCR	IDC
HCRS104	(μH)	MAX.(Ω)	MAX.(A)
1R5N	1.5±30%	0.0081	10
2R1N	2.1±30%	0.009	8.5
3R3N	3.3±30%	0.012	7.5
4R7N	4.7±30%	0.020	5.5
5R8N	5.8±30%	0.024	5.5
7R0N	7.0±30%	0.027	4.8
100	10±30%	0.035	4.4
120	12±30%	0.04	4.0
150	15±30%	0.05	3.6
220	22±30%	0.073	2.9
330	33±30%	0.093	2.3
470	47±30%	0.128	2.1
680	68±30%	0.213	1.5
101	100±30%	0.304	1.35
151	150±30%	0.506	1.15
221	220±30%	0.756	0.92
331	330±30%	1.09	0.70

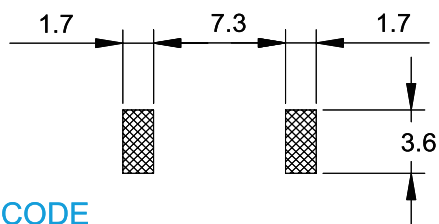


CONSTRUCTION (m/m)

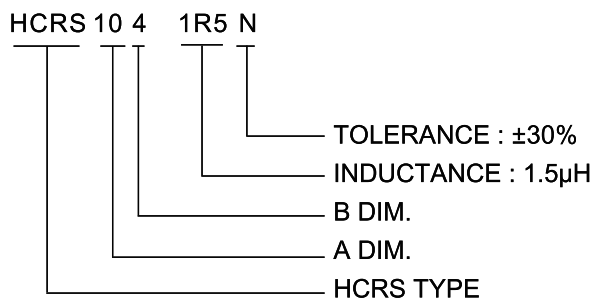


A: 10.5 MAX. B: 4.1 MAX.
 C: 7.7 REF. A1: 10.3 MAX.

Land Patterns



COIL CODE



can design any part to your requirements with different inductance.

* All parameters as this content presented are subject to final specifications both sides confirmed.