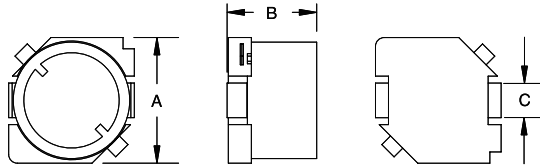


HPBS0732 TYPE

TYPE

HPBS 0732



A: 7 ± 0.2
 B: 3.2 ± 0.2
 C: 2.0 ± 0.1

SPECIFICATION

ITEM	L	DCR	IDC
HPBS0732	(μH)	MAX.(Ω)	MAX.(A)
3R3M	$3.3 \pm 20\%$	0.023	1.9
4R7M	$4.7 \pm 20\%$	0.036	1.7
6R8M	$6.8 \pm 20\%$	0.041	1.6
100M	$10 \pm 20\%$	0.053	1.4
150M	$15 \pm 20\%$	0.075	1.1
220M	$22 \pm 20\%$	0.110	0.96
330M	$33 \pm 20\%$	0.160	0.75
470M	$47 \pm 20\%$	0.240	0.67
680M	$68 \pm 20\%$	0.310	0.59
101M	$100 \pm 20\%$	0.450	0.45
151M	$150 \pm 20\%$	0.650	0.37
221M	$220 \pm 20\%$	1.050	0.29
331M	$330 \pm 20\%$	1.670	0.22
471M	$470 \pm 20\%$	2.050	0.20
681M	$680 \pm 20\%$	3.150	0.16
102M	$1000 \pm 20\%$	4.780	0.13

K: $\pm 10\%$ M: $\pm 20\%$

can design any part to your requirements with different inductance.

* All parameters as this content presented are subject to final specifications both sides confirmed.

SMD