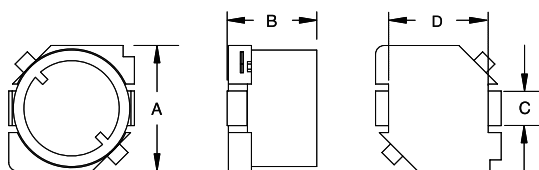
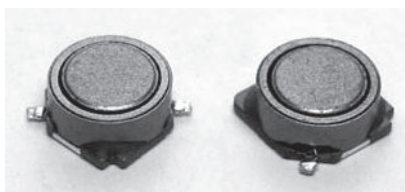


HPBS0745 TYPE

TYPE

HPBS 0745



A: 7 ± 0.2
 B: 4.5 ± 0.3
 C: 2.0 ± 0.1
 D: 4.4

SPECIFICATION

ITEM	L	DCR	IDC
HPBS0745	(μ H)	MAX.(Ω)	MAX.(A)
3R3M	$3.3 \pm 20\%$	0.020	2.5
4R7M	$4.7 \pm 20\%$	0.030	2
6R8M	$6.8 \pm 20\%$	0.036	1.7
100M	$10 \pm 20\%$	0.039	1.3
150M	$15 \pm 20\%$	0.052	1.1
220M	$22 \pm 20\%$	0.061	0.9
330M	$33 \pm 20\%$	0.096	0.82
470M	$47 \pm 20\%$	0.125	0.75
680M	$68 \pm 20\%$	0.175	0.6
101M	$100 \pm 20\%$	0.25	0.5
151M	$150 \pm 20\%$	0.34	0.4
221M	$220 \pm 20\%$	0.52	0.33
331M	$330 \pm 20\%$	0.74	0.25
471M	$470 \pm 20\%$	1.05	0.22
681M	$680 \pm 20\%$	1.48	0.2
102M	$1000 \pm 20\%$	2.28	0.14

K: $\pm 10\%$ M: $\pm 20\%$

can design any part to your requirements with different inductance.

* All parameters as this content presented are subject to final specifications both sides confirmed.