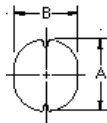


HPC0403 TYPE

TYPE

DIMENSION

HPC 0403: 1 μ H ~ 68 μ H



A: 4.5 \pm 0.3
 B: 4.0 \pm 0.3
 C: 3.2 \pm 0.3
 D: 1.2 REF

SPECIFICATION

ITEM	L (μ H)	DCR MAX. (Ω)	IDC MAX. (A)
HPC0403			
1R0M	1.0 \pm 20%	0.049	2.56
1R4M	1.4 \pm 20%	0.057	2.52
1R8M	1.8 \pm 20%	0.064	1.95
2R2M	2.2 \pm 20%	0.072	1.75
2R7M	2.7 \pm 20%	0.079	1.58
3R3M	3.3 \pm 20%	0.087	1.44
3R9M	3.9 \pm 20%	0.094	1.33
4R7M	4.7 \pm 20%	0.109	1.15
5R6M	5.6 \pm 20%	0.126	0.99
6R8M	6.8 \pm 20%	0.132	0.93
8R2M	8.2 \pm 20%	0.147	0.84
100M	10 \pm 20%	0.182	1.04
120M	12 \pm 20%	0.210	0.94
150M	15 \pm 20%	0.235	0.85
180M	18 \pm 20%	0.338	0.74
220M	22 \pm 20%	0.378	0.68
270M	27 \pm 20%	0.522	0.62
330K	33 \pm 10%	0.540	0.56
390K	39 \pm 10%	0.587	0.52
470K	47 \pm 10%	0.844	0.44
560K	56 \pm 10%	0.937	0.42
680K	68 \pm 10%	1.117	0.37

K: \pm 10% M: \pm 20%

can design any part to your requirements with different inductance.

* All parameters as this content presented are subject to final specifications both sides confirmed.