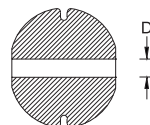
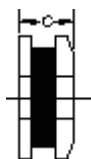
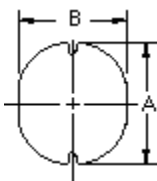


HPC0703 TYPE

TYPE

DIMENSION

HPC 0703: 10 μ H ~ 330 μ H



A : 7.8 \pm 0.3
 B : 7.0 \pm 0.3
 C : 3.8 Max
 D : 1.6 REF

SPECIFICATION

ITEM	L	DCR	IDC
HPC0703	(μ H)	MAX. (Ω)	MAX. (A)
100M	10 \pm 20%	0.08	1.44
120M	12 \pm 20%	0.09	1.39
150M	15 \pm 20%	0.10	1.24
180M	18 \pm 20%	0.11	1.12
220M	22 \pm 20%	0.13	1.07
270M	27 \pm 20%	0.15	0.94
330M	33 \pm 20%	0.17	0.85
390M	39 \pm 20%	0.22	0.74
470M	47 \pm 20%	0.25	0.68
560K	56 \pm 10%	0.28	0.64
680K	68 \pm 10%	0.33	0.59
820K	82 \pm 10%	0.41	0.54
101K	100 \pm 10%	0.48	0.51
121K	120 \pm 10%	0.54	0.49
151K	150 \pm 10%	0.75	0.40
181K	180 \pm 10%	1.02	0.36
221K	220 \pm 10%	1.20	0.31
271K	270 \pm 10%	1.31	0.29
331K	330 \pm 10%	1.50	0.28

K: \pm 10% M: \pm 20%

can design any part to your requirements with different inductance.

* All parameters as this content presented are subject to final specifications both sides confirmed.