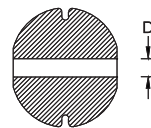
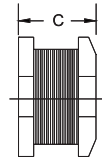
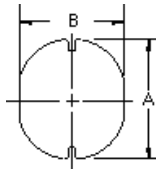


HPC0705 TYPE

TYPE

DIMENSION

HPC 0705: 10μH ~ 470μH



A : 7.8±0.3
 B : 7.0±0.3
 C : 5.0±0.5
 D : 2.1 REF

SPECIFICATION

ITEM	L	DCR	IDC
HPC0705	(μH)	MAX. (Ω)	MAX. (A)
100K	10±10%	0.07	2.30
120K	12±10%	0.08	2.00
150K	15±10%	0.09	1.80
180K	18±10%	0.10	1.60
220K	22±10%	0.11	1.50
270K	27±10%	0.12	1.30
330K	33±10%	0.13	1.20
390K	39±10%	0.16	1.10
470K	47±10%	0.18	1.10
560K	56±10%	0.24	0.94
680K	68±10%	0.28	0.85
820K	82±10%	0.37	0.78
101K	100±10%	0.43	0.72
121K	120±10%	0.47	0.66
151K	150±10%	0.64	0.58
181K	180±10%	0.71	0.51
221K	220±10%	0.96	0.49
271K	270±10%	1.11	0.42
331K	330±10%	1.26	0.40
391K	390±10%	1.77	0.36
471K	470±10%	1.96	0.34

K: ±10%

can design any part to your requirements with different inductance.

* All parameters as this content presented are subject to final specifications both sides confirmed.