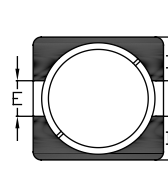
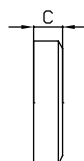
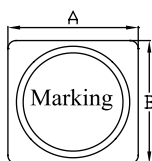
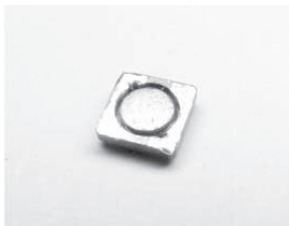


HSDI6822 TYPE

TYPE

DIMENSION

HSDI6822



A: 6.8 ± 3.0
 B: 6.8 ± 3.0
 C: 2.3 ± 0.2
 D: 2.3 REF
 E: 2.2 REF

SPECIFICATION

Item	Inductance (μH)	Tolerance (%)	Isat max (A)	DCR max ($\text{m}\Omega$)	SRF typ. (MHz)
HSDI6822					
HSDI68221R0N	1.0	± 30	4.60	14	96
HSDI68221R5N	1.5	± 30	4.00	18	75
HSDI68222R2N	2.2	± 30	2.70	24	62
HSDI68223R3N	3.3	± 30	2.50	32	48
HSDI68225R0N	5.0	± 30	2.00	46	50
HSDI68226R2N	6.2	± 30	1.80	58	40
HSDI68227R5N	7.5	± 30	1.60	60	37
HSDI6822100N	10	± 30	1.40	70	35
HSDI6822120N	12	± 30	1.20	80	30
HSDI6822150N	15	± 30	1.10	95	23
HSDI6822180N	18	± 30	1.00	100	24
HSDI6822220N	22	± 30	1.00	120	20
HSDI6822330N	33	± 30	0.78	200	17
HSDI6822470N	47	± 30	0.62	280	14
HSDI6822680N	68	± 30	0.50	360	11
HSDI6822101N	100	± 30	0.47	480	9
HSDI6822151N	150	± 30	0.32	580	7
HSDI6822102N	1000	± 30	0.13	5000	3

N: $\pm 30\%$

can design any part to your requirements with different inductance.

* All parameters as this content presented are subject to final specifications both sides confirmed.