

(Mark)	(Qty.)	(EC Content)	(EC Reason)	(EC No.)	(Date)	(Proposer)
a						
b						
c						

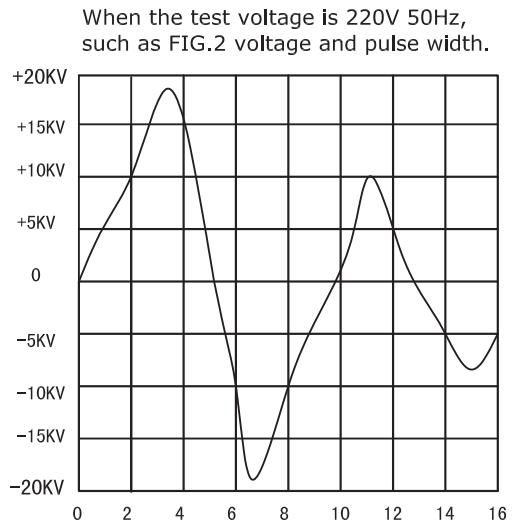
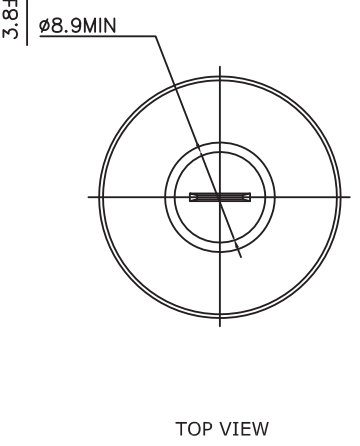
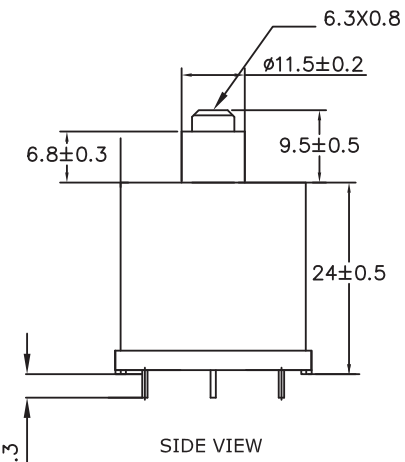
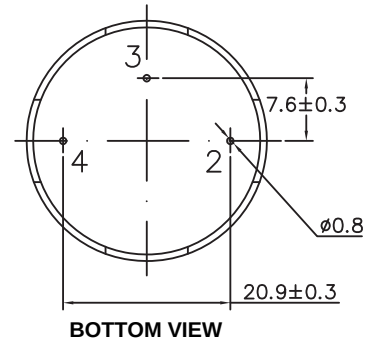


FIG.2  
TYPICAL WAVEFORM AT THE H.V. POINT WITH PULSE WIDTH IN THE TRANSFORMER INTO A 20PF LOAD

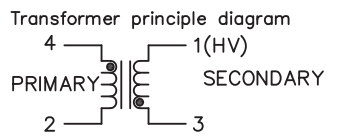
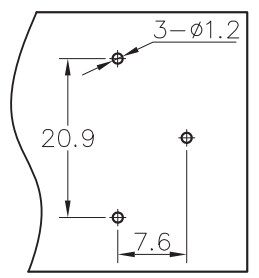


FIG. 3



PCB FIX SIZE

NOTES:

- 1.PRIMARY: 14± 1/2 TURN 1UEW-0.45;
- 2.SECONDARY: 2600 TURN 1UEW-0.06;
- 3.HYPOT 1250VAC. BETWEEN PRIMARY AND SECONDARY;
- 4.THE USE OF TEMPERATURE - 40~85 ° C;
- 5.FILL MATERIAL: EPOXY,VACUUM FORMED;
- 6.PEAK PRIMARY CURRENT: 60 AMPS;
- 7.ADDITIONAL ELECTRICAL SPEC'S.(FOR REF.ONLY)  
PRIMARY: 0.037 OHMS ± 30%,5.8uH ± 15%;  
SECONDARY:690 OHMS ± 30%,  
140mH± 15%;  
MEASURED AT 1KHZ,75° F
- 8.SPARK VOLTAGE: >18KV(CL=20PF);  
DISCHARGE PULSE:5± 2us;
- 9.INSULATION RESISTANCE >100M OHMS;
- 10.OUTPUT TERMINAL BY TENSION TEST,  
DRAWING FORCE GREATER THAN 3kgf.cm;
- 11.OUTPUT TERMINAL WITH A TORSION  
TESTER,TORQUE GREATER THAN 8kgf.cm.

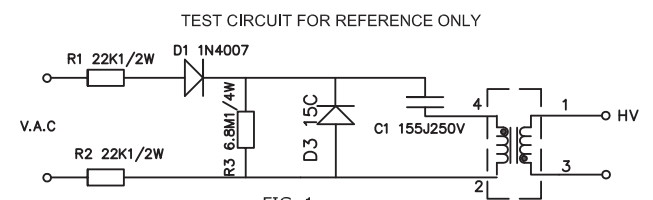


FIG. 1

NOTES: AB points between the trigger voltage is 150V

MAP	A4	PAGE	1	FIRST CORNER		PRODUCT	<b>18FS-152</b>		
UNIT	mm	SCALE	1:1			MATERIAL NO.			
 <b>GEI INC.</b> geicomponents.com				APPOVE		DRAWING NO.			
				CHECK		DRAWING NAME	Finished product		
				DESIGN		DRAWING NO.		1.1	