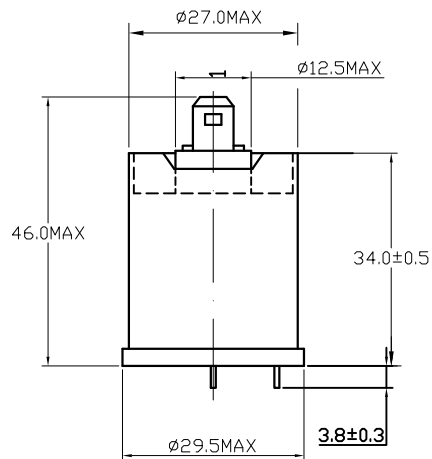
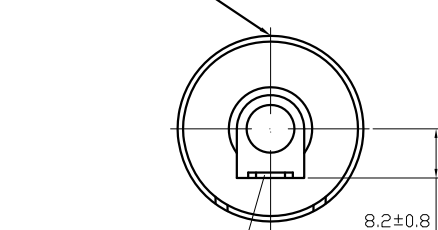


BOTTOM VIEW



SIDE VIEW

标签位置: 次级针脚正上方



TOP VIEW

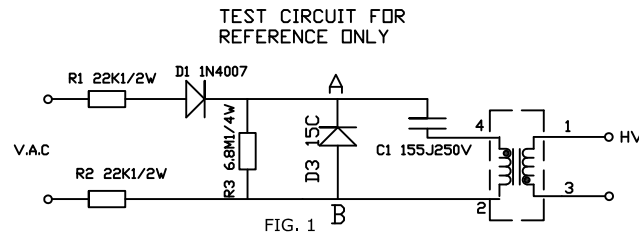
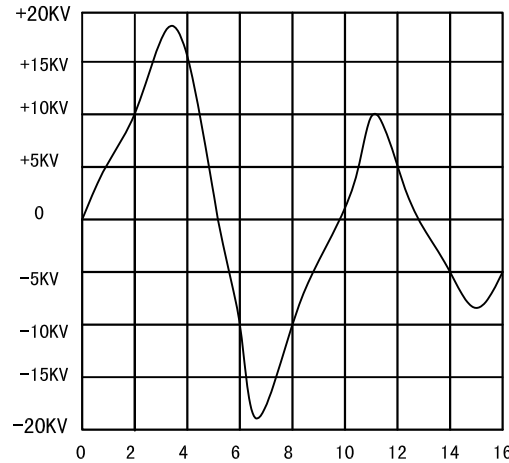


FIG. 1

NOTES: AB points between the trigger voltage is 150V

When the test voltage is 220V50Hz, such as FIG.2 voltage and pulse width.



TYPICAL WAVEFORM AT THE H.V. POINT WITH PULSE WIDTH IN THE TRANSFORMER INTO A 20PF LOAD

FIG.2

Transformer principle diagram

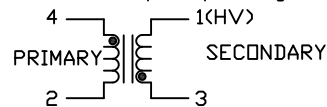


FIG. 3

NOTES:

- 1.PRIMARY: 23 ± 1/2 TURN 1UEW-0.45;
- 2.SECONDARY: 3420 TURN 1UEW-0.057;
- 3.HYPOT 1250VAC. BETWEEN PRIMARY AND SECONDARY;
- 4.THE USE OF TEMPERATURE - 40~85 ° C;
- 5.FILL MATERIAL: EPOXY,VACUUM FORMED;
- 6.PEAK PRIMARY CURRENT: 60 AMPS;
- 7.ADDITIONAL ELECTRICAL SPEC'S.(FOR REF.ONLY)
PRIMARY: 0.076 OHMS± 20%,18uH ± 15%;
SECONDARY:1150 OHMS ± 20%, 340mH± 15%;
MEASURED AT 1KHz,75° F
- 8.SPARK VOLTAGE: >18KV(CL=20PF);DISCHARGE PULSE:5 ± 2us;
- 9.INSULATION RESISTANCE >100M OHMS;
- 10.OUTPUT TERMINAL BY TENSION TEST, DRAWING FORCE GREATER THAN 3kgf.cm;
- 11.OUTPUT TERMINAL WITH A TORSION TESTER,TORQUE GREATER THAN 8kgf.cm.

GEI INC.

PRODUCT	STANDARD&NAME	Material NO	DRAWING NAME			18RS-024A			
MATERIAL	THICKNESS	FINISH	UNIT	SCALE	DRAWING NO.				
		2010. 07. 21	mm		PAGE		1	VERSIONS	1. 0
DATE	REVISE	APPROVE	CHECK	DESIGN	geicomponents.com				