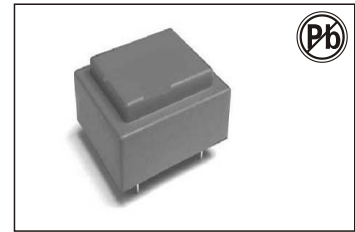


## 50/60HZ PCB MOUNT TRANSFORMERS – EI RANGE

# 22W EI 60-21-PE6021 SERIES



### FEATURES:

- Vacuum filling
- Two compartments bobbins
- Self-extinguishing plastics UL 94 VO
- Degree of protection IP 00
- 550 grams weight

### OPTIONS:

- Bulk packaging is standard
- Custom design available

### COMMON APPLICATIONS:

- Medical equipments
- Industrial equipments
- Industrial controls
- Test equipment
- Industrial computers
- Avionics & telecom

## ELECTRICAL CHARACTERISTICS

PRIMARY VOLTAGE: 230						PRIMARY VOLTAGE: 115					
Part Number	Secondary voltage V	Secondary Current mA	No-load voltage V	Ambient Temperature °C	Rating VA	Part Number	Secondary voltage V	Secondary Current mA	No-load voltage V	Ambient Temperature °C	Rating VA
PE602132	6	3667	6.8	T50B	22	PE602144	6	3667	6.8	T50B	22
PE602133	9	2444	10.3	T50B	22	PE602145	9	2444	10.3	T50B	22
PE602134	12	1833	13.7	T50B	22	PE602146	12	1833	13.7	T50B	22
PE602135	15	1467	17.1	T50B	22	PE602147	15	1467	17.1	T50B	22
PE602136	18	1222	20.5	T50B	22	PE602148	18	1222	20.5	T50B	22
PE602137	24	917	27.3	T50B	22	PE602149	24	917	27.3	T50B	22
PE602138	2 × 6	2 × 1833	2 × 6.8	T50B	22	PE602150	2 × 6	2 × 1833	2 × 6.8	T50B	22
PE602139	2 × 9	2 × 1222	2 × 10.3	T50B	22	PE602151	2 × 9	2 × 1222	2 × 10.3	T50B	22
PE602140	2 × 12	2 × 917	2 × 13.7	T50B	22	PE602152	2 × 12	2 × 917	2 × 13.7	T50B	22
PE602141	2 × 15	2 × 733	2 × 17.1	T50B	22	PE602153	2 × 15	2 × 733	2 × 17.1	T50B	22
PE602142	2 × 18	2 × 611	2 × 20.5	T50B	22	PE602154	2 × 18	2 × 611	2 × 20.5	T50B	22
PE602143*	2 × 24	2 × 458	2 × 27.3	T50B	22	PE602155	2 × 24	2 × 458	2 × 27.3	T50B	22

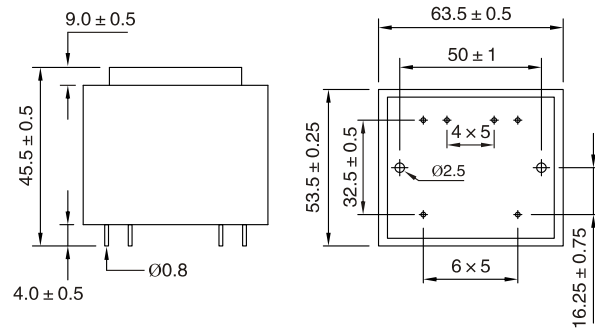
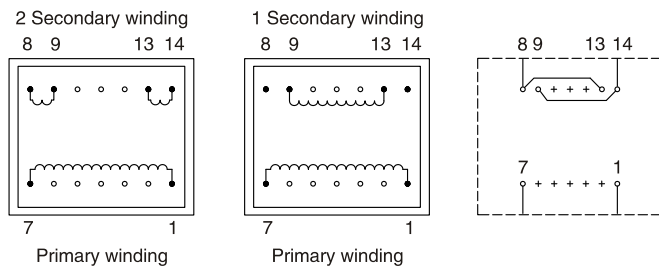
\* To be noted : 2 x 24 V non safety transformer approved, conform to EN 61558-2-6 (Isolating transformer).

## TECHNICAL INFORMATION

- Resin class B CEI 85 (20 000 h testing to CEI 126)
- Fuse protection on primary side (see diagram) to be assumed by customer
- 30 V and 36 V models are VDE EN 61558-2-6 certified (production on request)
- Insulation voltage 4 KV (6 KV MYRRA test)
- 100% tested production
- Certification : CCA procedure on request

## PHYSICAL CHARACTERISTICS

All dimensions in mm



Recommended Drill-hole Diameter for 1.3mm pins  
 Recommended Drill-hole Diameter for Mountings=4mm